



## 3 WOOD BOTTOM VIEW

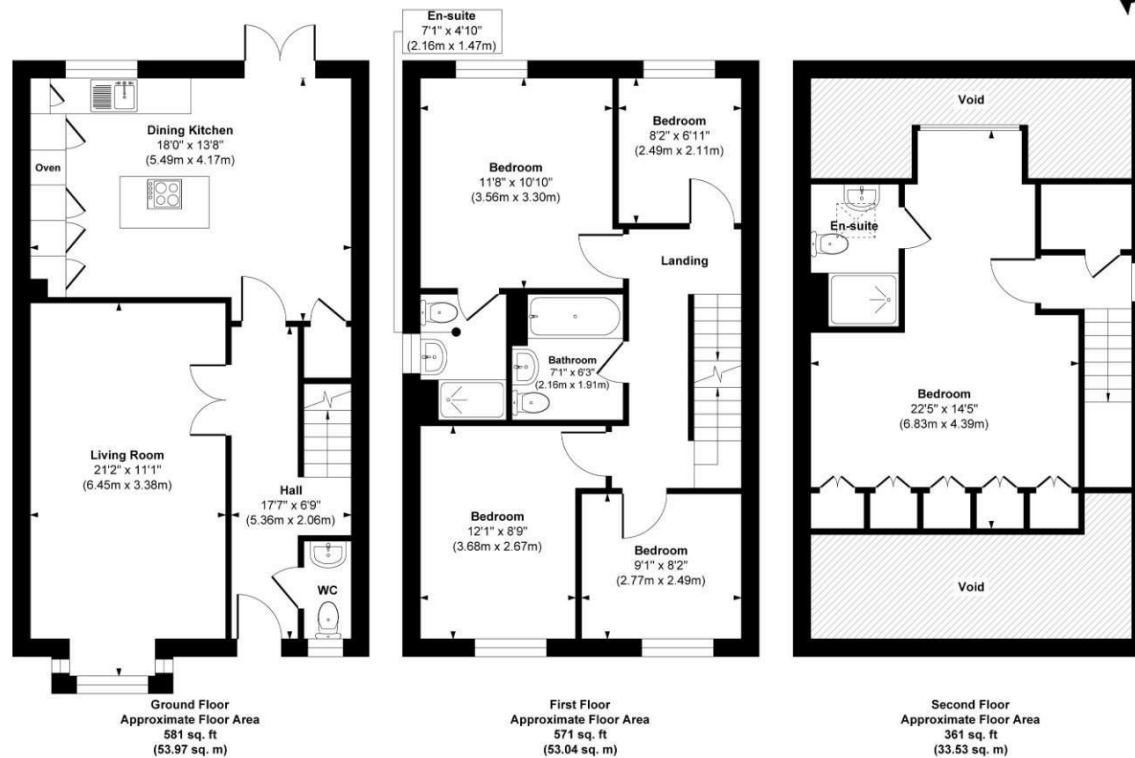
LEEDS, LS18 4TP

£599,950  
FREEHOLD

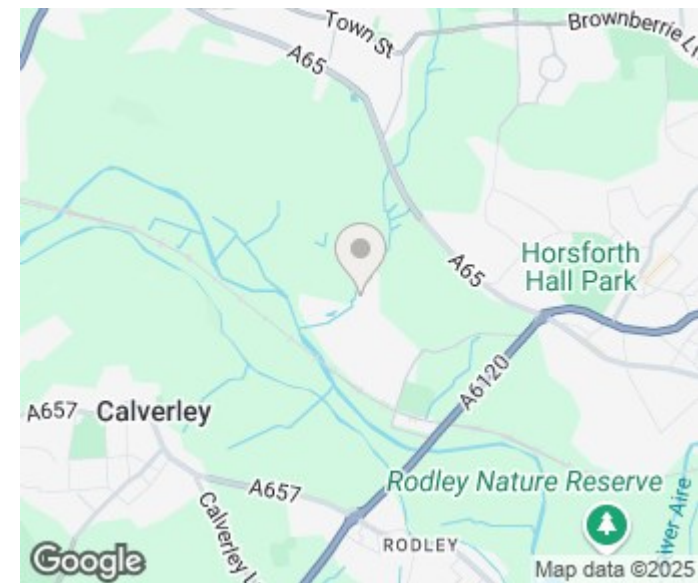
Are you looking for an IDEAL detached family home in Horsforth with 5 bedrooms, countryside views and a meticulously landscaped South facing garden? look no further than Wood Bottom View in Horsforth. Take a look at our video tour...

MONROE

SELLERS OF THE FINEST HOMES



Gross internal floor area (approx.): 1513 sq m (140.5 sq ft)  
For illustrative purposes only. Not to Scale. Copyright © Zenith Creations.



Energy Efficiency Rating		
	Current	Potential
Very energy efficient - lower running costs		
(92 plus) <b>A</b>		92
(81-91) <b>B</b>	85	
(69-80) <b>C</b>		
(55-68) <b>D</b>		
(39-54) <b>E</b>		
(21-38) <b>F</b>		
(1-20) <b>G</b>		
Not energy efficient - higher running costs		
<b>England &amp; Wales</b>	EU Directive 2002/91/EC	

Agents Note: Whilst every care has been taken to prepare these particulars, they are for guidance purposes only. All measurements are approximate and are for general guidance purposes only and whilst every care has been taken to ensure their accuracy, they should not be relied upon and potential buyers/tenants are advised to recheck the measurements

Alwoodley Sales  
716 King Lane Alwoodley  
Leeds  
West Yorkshire  
LS17 7BA

0113 870 4443  
hello@monroeestateagents.com  
www.monroeestateagents.com

MONROE

SELLERS OF THE FINEST HOMES